

COMMUNITY AND CULTURE COMMITTEE MEETING

Meeting held on Wednesday, 10 August 2016, at 6.30pm
Unley Council Chambers, 181 Unley Road, Unley

MEMBERS PRESENT:

Councillor Peter Hughes (Presiding Member)
Councillor Michael Hudson
Councillor Michael Rabbitt
Councillor Robert Schnell
Rev Dr Lynn Arnold
Mrs Elizabeth Bleby
Mr John Hill

OFFICERS PRESENT:

Ms Megan Berghuis, General Manager Community
Ms Carly Hemus, Events Management Specialist
Mr Matthew Ives, Cultural Development Coordinator
Ms Celine Luya, Manager Community Services
Ms Kat Ryan, Coordinator Environmental Projects & Strategy
Ms Pam Hocking, Executive Assistant Community

OBSERVERS:

Cr. Anthony Lapidge

REPORT TO COUNCIL: 22/8/2016

ACKNOWLEDGEMENT:

The Presiding Member opened the meeting at 6.30pm with the Acknowledgement and welcomed Members and members of the Gallery to the meeting.

APOLOGIES:

CONFIRMATION OF MINUTES:

MOVED: Councillor Michael Hudson
SECONDED: Councillor Michael Rabbitt

That the minutes of the meeting of the Community and Culture Committee held on Wednesday 4 May 2016, as printed and circulated, be taken as read and signed as a correct record.

CARRIED

DEPUTATIONS / PRESENTATIONS:

Nil.

REPORTS OF OFFICERS:

ITEM 21 CONFLICT OF INTEREST

Mr John Hill advised that in relation to Item 22, he is the Chairperson of SALA and is a member of the UniSA Council. The Presiding Member advised that he did not believe this was a conflict of interest.

ITEM 22: 2016/17 COMMUNITY EVENT SPONSORSHIP FUNDING

Ms Carly Hemus, Event Management Specialist, spoke to the item and was available to answer questions.

SUSPENSION OF MEETING PROCEDURES

The Presiding Member advised the Committee that he thought the meeting would benefit from a suspension of meeting procedures for up to 20 minutes to allow for open discussion.

This was agreed with a two-thirds majority.

Meeting procedures were suspended at 6.35pm.

Meeting procedures were reinstated at 6.45pm.

MOVED: Rev Dr Lynn Arnold
SECONDED: Mrs Elizabeth Bleby

That it be recommended to Council that:

1. The report be received.
2. Community Event Sponsorship funding as detailed in Attachment 1 to Item 22/2016 be endorsed and the applicants notified of the outcome of their application.

CARRIED UNANIMOUSLY

ITEM 23: COMMUNITY WORK PLAN UPDATE

Ms Megan Berghuis, General Manager Community, spoke to the item and was available to answer questions.

SUSPENSION OF MEETING PROCEDURES

The Presiding Member advised the Committee that he thought the meeting would benefit from a suspension of meeting procedures for up to 20 minutes to allow for open discussion.

This was agreed with a two-thirds majority.

Meeting procedures were suspended at 6.47pm.

Meeting procedures were reinstated at 7.12pm.

MOVED: Councillor Michael Rabbitt

SECONDED: Mr John Hill

That it be recommended to Council that:

1. The report be received.

CARRIED UNANIMOUSLY

ITEM 24: CULTURAL DEVELOPMENT UPDATE

Mr Matthew Ives, Cultural Development Coordinator, presented on the item and was available to answer questions (see Attachment 1).

SUSPENSION OF MEETING PROCEDURES

The Presiding Member advised the Committee that he thought the meeting would benefit from a suspension of meeting procedures for up to 20 minutes to allow for open discussion.

This was agreed with a two-thirds majority.

Meeting procedures were suspended at 7.14pm.

Meeting procedures were reinstated at 7.25pm.

MOVED: Mrs Elizabeth Bleby

SECONDED: Rev Dr Lynn Arnold

That it be recommended to Council that:

1. The report be received.

CARRIED UNANIMOUSLY

ITEM 27: MOTION WITHOUT NOTICE
ALL CONNECTIONS TO UNLEY ART PRIZE AND THE SALA CITY OF UNLEY
ACTIVE AGEING AWARD

MOVED: Councillor Bob Schnell

SECONDED: Councillor Michael Hudson

That it be recommended to Council that:

1. The Administration undertake a review of the *All Connections to Unley* Art Prize and the SALA City of Unley Active Ageing Award with the desire that both become annual events, effective in 2017.

CARRIED

ITEM 25: ACCESS AND INCLUSION ACTION PLAN 2016-2020

Ms Celine Luya, Manager Community Services, spoke to the item and was available to answer questions.

SUSPENSION OF MEETING PROCEDURES

The Presiding Member advised the Committee that he thought the meeting would benefit from a suspension of meeting procedures for up to 20 minutes to allow for open discussion.

This was agreed with a two-thirds majority.

Meeting procedures were suspended at 7.35pm.

Meeting procedures were reinstated at 7.55pm.

MOVED: Councillor Bob Schnell

SECONDED: Councillor Michael Hudson

That it be recommended to Council that:

1. The report be received.
2. Consideration be given to a review of the delivery timeframes for items 6.1 and 6.2 of the draft Access and Inclusion Plan 2016-2020.

CARRIED

ITEM 26: DRAFT ENVIRONMENTAL AND SUSTAINABILITY STRATEGY

Ms Kat Ryan, Coordinator Environmental Projects & Strategy, presented on the item and was available to answer questions (see Attachment 2).

SUSPENSION OF MEETING PROCEDURES

The Presiding Member advised the Committee that he thought the meeting would benefit from a suspension of meeting procedures for up to 20 minutes to allow for open discussion.

This was agreed with a two-thirds majority.
Meeting procedures were suspended at 8.10pm.
Meeting procedures were reinstated at 8.25pm.

MOVED: Rev Dr Lynn Arnold
SECONDED: Councillor Michael Rabbitt

That it be recommended to Council that:

1. The report be received.

CARRIED UNANIMOUSLY

ITEM 27: MOTION WITHOUT NOTICE

ALL CONNECTIONS TO UNLEY ART PRIZE AND THE SALA CITY OF UNLEY ACTIVE AGEING AWARD

See page 4 of these minutes.

NEXT MEETINGS:

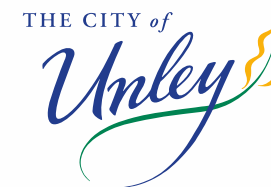
To be advised.

CLOSE OF MEETING

The Presiding Member formally thanked members for their contribution to the work of the Committee and closed the meeting at 8.27pm.

.....
PRESIDING MEMBER

.....
DATE



Cultural Development update

Community and Culture Committee

10 August 2016



All Connections to Unley Art Prize – Open category

Peter Barnes- *God and Mammon*



All Connections to Unley Art Prize – Youth category

Emma Gibson- *Suburban Fairy Tale*



All Connections to Unley Art Prize – Children category

Yike Ma- *The Purple Unley*



All Connections to Unley Art Prize

Out on the streets



SALA Festival - City of Unley Active Ageing Award

Sheila Whittam- *The Pianist*



linger, longer – Festival of Mud

Choreographer- Billie Cook



Emerging Art Walls

Confirmed sites...more to follow.

Lead Artist- Seb Humphreys with Vans The Omega, KAB 101, James Dodd, Buff Dis



Water Tanks Exhibition

Unley Library, Soutar Park, Forestville Reserve, Goodwood Road



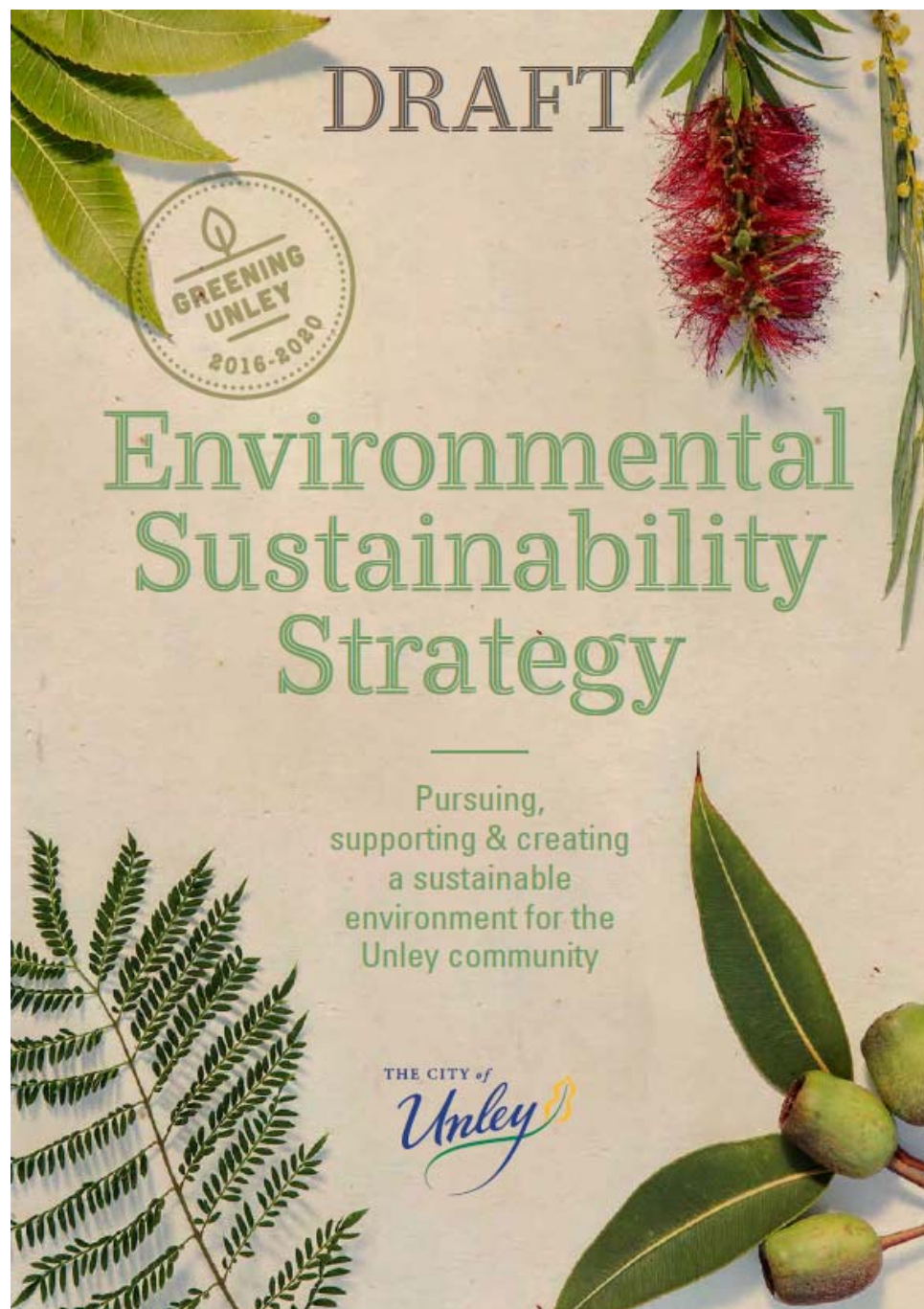
Four Elements Rejuvenation

Artist- Greg Healey



Reconciliation Week

Indigenous musicians- Nancy Bates and Ellie Lovegrove



Community & Culture Committee August 2016



EMERGING
Our path
to a future city



LIVING
Our path
to a thriving city



MOVING
Our path
to an accessible city



GREENING
Our path
to a sustainable city



GREENING OUR PATH TO A SUSTAINABLE CITY



The City of Unley is committed to pursuing, supporting and creating an environment that will sustain both current and future generations. This is a goal that is shared by our community and is a primary objective of governments across the world.

**"OUR CITY IS A GREAT PLACE FOR
FAMILIES, WITH QUIET SUBURBAN
STREETS AND A SUPPORTIVE
COMMUNITY..."**

The City of Unley acknowledges that it has direct and indirect responsibilities for addressing issues such as climate change, water conservation and waste management. Council will endeavour to use these spheres of influence to the fullest possible.

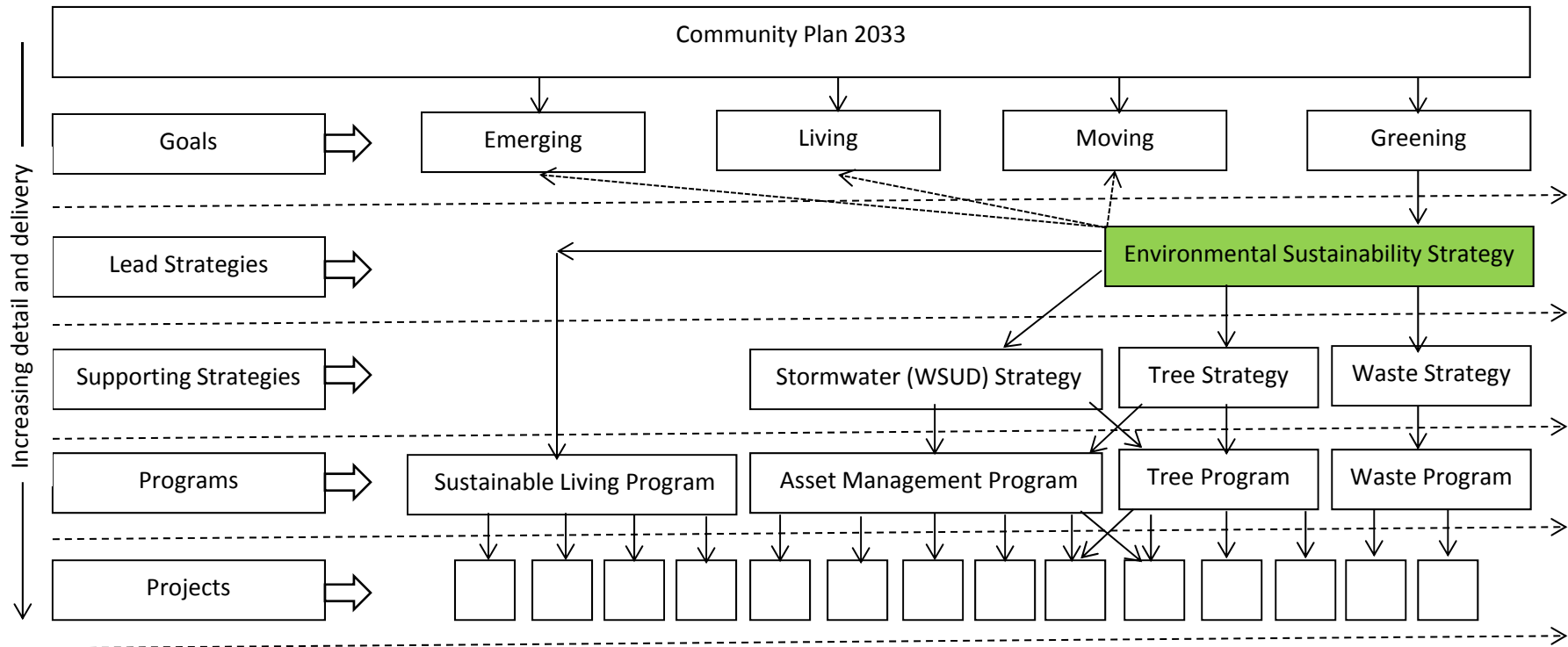
Conservation, as well as environmental sustainability and planning aspects for both the residential and business sectors, particularly in the areas of open spaces, parks and reserves, water resources and underground water, will continue to be a major focus of our planning and development work.

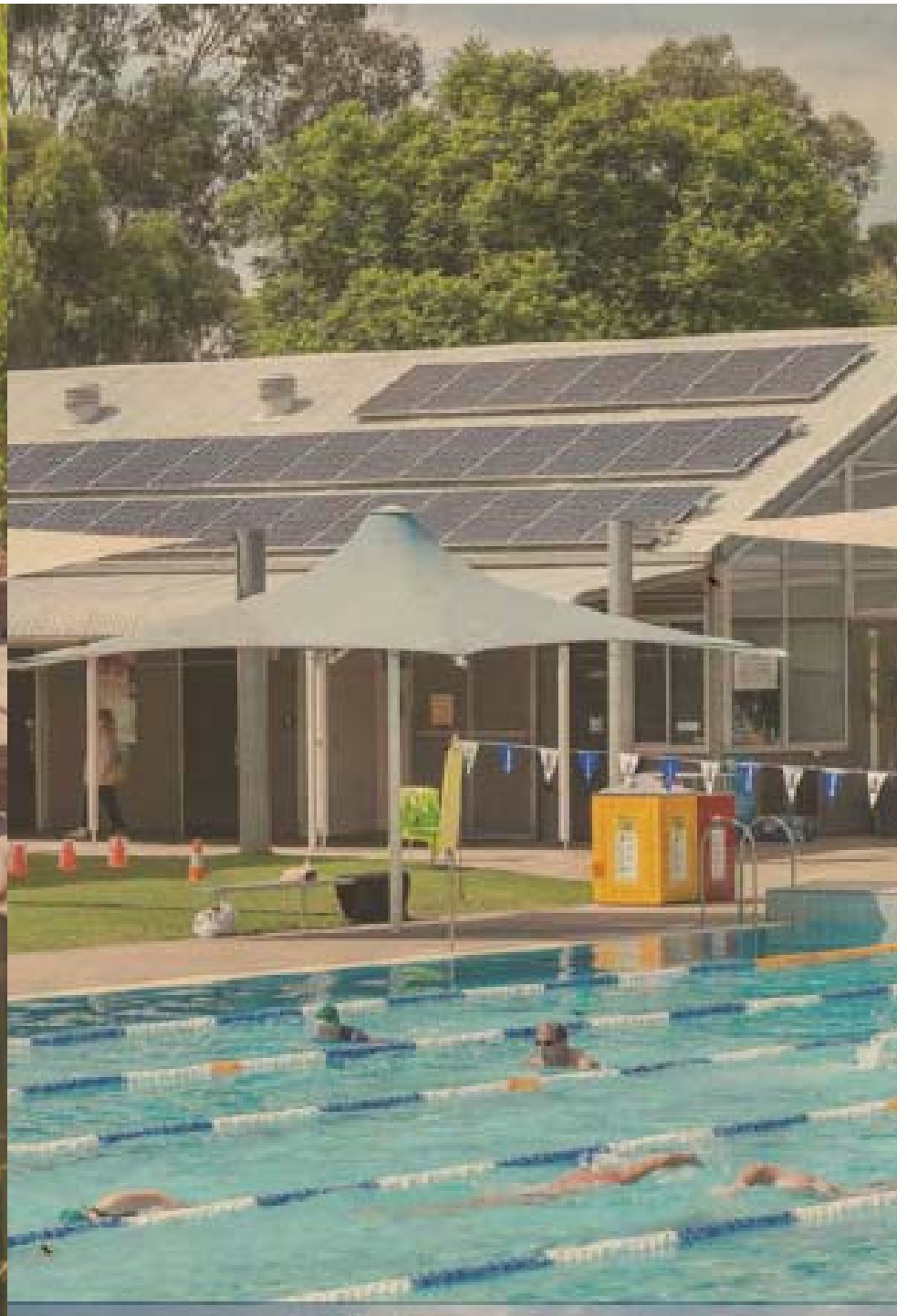
Council is committed to using better use of our natural resources and is looking for innovative ways to do this.

Our City is a great place for families, with quiet suburban streets and a supportive community — but there are some challenges ahead for the future of our housing, services, resources, density of living and environmental growth in our suburb.

We need to get the planning right, and that means getting people more actively engaged. The Community Plan 2020 focuses on with a road map that will make this possible.

Strategic Context







**GREEN
UNLEY**



**WATERWISE
UNLEY**



**RESILIENT
UNLEY**



**RESOURCEFUL
UNLEY**



**ENERGYWISE
UNLEY**





Green Unley

OBJECTIVE

*Improving and maintaining
Unley's Urban Forest*

COUNCIL TARGET

*Maintain the City's tree canopy cover
at 26 per cent*

COMMUNITY TARGET

*Minimum 400 street verges converted from
dolomite to loam and planted*



Waterwise Unley

OBJECTIVE

Efficient, effective and sustainable water management

COUNCIL TARGET

Minimum 40 streets with stormwater improvements

COMMUNITY TARGET

Inform and educate residents on water saving measures in conjunction with relevant authorities



Resilient Unley

OBJECTIVE

Increasing resilience to changes in climate

COUNCIL TARGET

Maintain and increase our open space. Create a minimum of three new spaces, which can include vertical and rooftop gardens

COMMUNITY TARGET

Minimum 2 information sessions on positive actions residents can take to improve resilience to climate change



Resourceful Unley

OBJECTIVE

*Excellence in waste management, through
diversion, avoidance and re-use*

COUNCIL TARGET

*Divert from landfill 75 per cent of material
from Council facilities and events*

COMMUNITY TARGET

*Divert from landfill 70 per cent of residential
material presented at kerbside*



Energywise Unley

OBJECTIVE


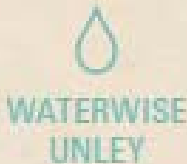


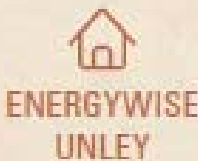
Increasing the energy efficiency of the City

COUNCIL TARGET

*Reduce net total of grid based energy use
by 5 per cent*

COMMUNITY TARGET

*Provide information on energy efficiency
to encourage improvements including
increase of residential buildings with solar
panels to 35 per cent*

	OBJECTIVE	COUNCIL TARGET	COMMUNITY TARGET
	Improving and maintaining Unley's Urban Forest	Maintain minimum canopy cover of 26 per cent	Minimum 400 verges converted from dolomite to loam and plants
	Efficient, effective and sustainable water management	Minimum 40 streets with stormwater improvements	Inform and educate residents on water saving measures in conjunction with relevant authorities
	Increasing resilience for changes in climate	Maintain and increase our open space by creating a minimum 3 new spaces	Minimum 2 information sessions on positive actions residents can take to improve resilience to climate change
	Excellence in waste management, through diversion, avoidance and re-use	Divert from landfill 75 per cent of material from Council facilities and events	Divert from landfill 70 per cent of residential material presented at kerbside
	Increasing the energy efficiency of the City	Reduce net total of grid based energy use by 5 per cent	Provide information on energy efficiency to encourage increase of residential buildings with solar panels to 35 per cent.

Community & Culture Input

- Awareness
- Already Contributing
- Collective Targets
- Collaborative Projects
- Think Green in your planning & keep Environment in the loop



Greening Goals

GREENING OUR PATH TO A SUSTAINABLE CITY



Strategic Objective	Outcomes	Proposed Indicators
Renowned for its lifestyle and environmental balance	Water sensitive urban design is a feature of the City of Unley Innovative storm water management principles are in place Best practice principles are in place to reduce dependency on mains water and power Council, rate-payers and businesses make considered consumption decisions	Number of planning approvals Usage rate of mains water Usage rates of gas/electricity/wind/solar Incidence of damage to the city from natural events
Leaders in waste reduction	Reuse and recycle opportunities are maximised Our Community actively embraces reuse, recycle principles The amount of waste going to landfill is minimised	Number of hard rubbish collections Reduction in landfill tonnage Community survey
Functional open green space throughout the City of Unley	A network of linear paths and trails support biodiversity corridors Our City has innovatively found more open space in non-traditional places Our parks are a feature of the City Underused public and private spaces are more productive	Number of grey-space conversions Number of roof top gardens Number of green walls Increase in the area of open space